

ALSO AVAILABLE



VW T6.1 (2019+)  
GRILLE INTEGRATION KIT



VW CRAFTER (2017+)  
GRILLE INTEGRATION KIT



FORD TRANSIT CUSTOM (2018+)  
GRILLE INTEGRATION KIT



FIAT DUCATO (2014+)  
GRILLE INTEGRATION KIT



MERCEDES SPRINTER (2018+)  
GRILLE INTEGRATION KIT



MAN TGE (2017+)  
GRILLE INTEGRATION KIT



CLIP-ON LENSES  
AMBER AND REEDED LENSES



CAN INTERFACE  
PLUS CONTACTLESS READER

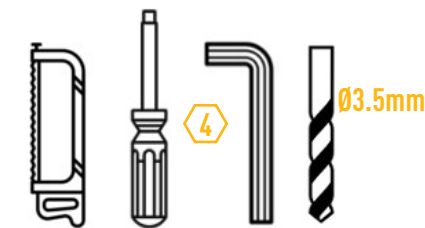
WHAT'S INCLUDED

- 4x Grille Mounting Brackets
- 4x Cutter Guides
- Anti-Theft Fasteners & Key
- Fitting Instructions

Additionally - Kit Includes:

- 2x High Performance LED Spotlights (Linear-6)
- 1x Two-Lamp Wiring Kit

TOOLS REQUIRED



! SIDE MOUNTING INFORMATION



LAZER  
HIGH PERFORMANCE LIGHTING

WWW.LAZERLAMPS.COM

+44 (0)1992 677374  
sales@lazerlamps.com

Lazer Lamps Ltd, Units 1&2 Harlow Mill Business Centre,  
Riverway, Harlow, Essex. CM20 2FD. United Kingdom

MADE IN THE UK /LAZERLAMPS /LAZERLAMPS

LAZER  
HIGH PERFORMANCE LIGHTING



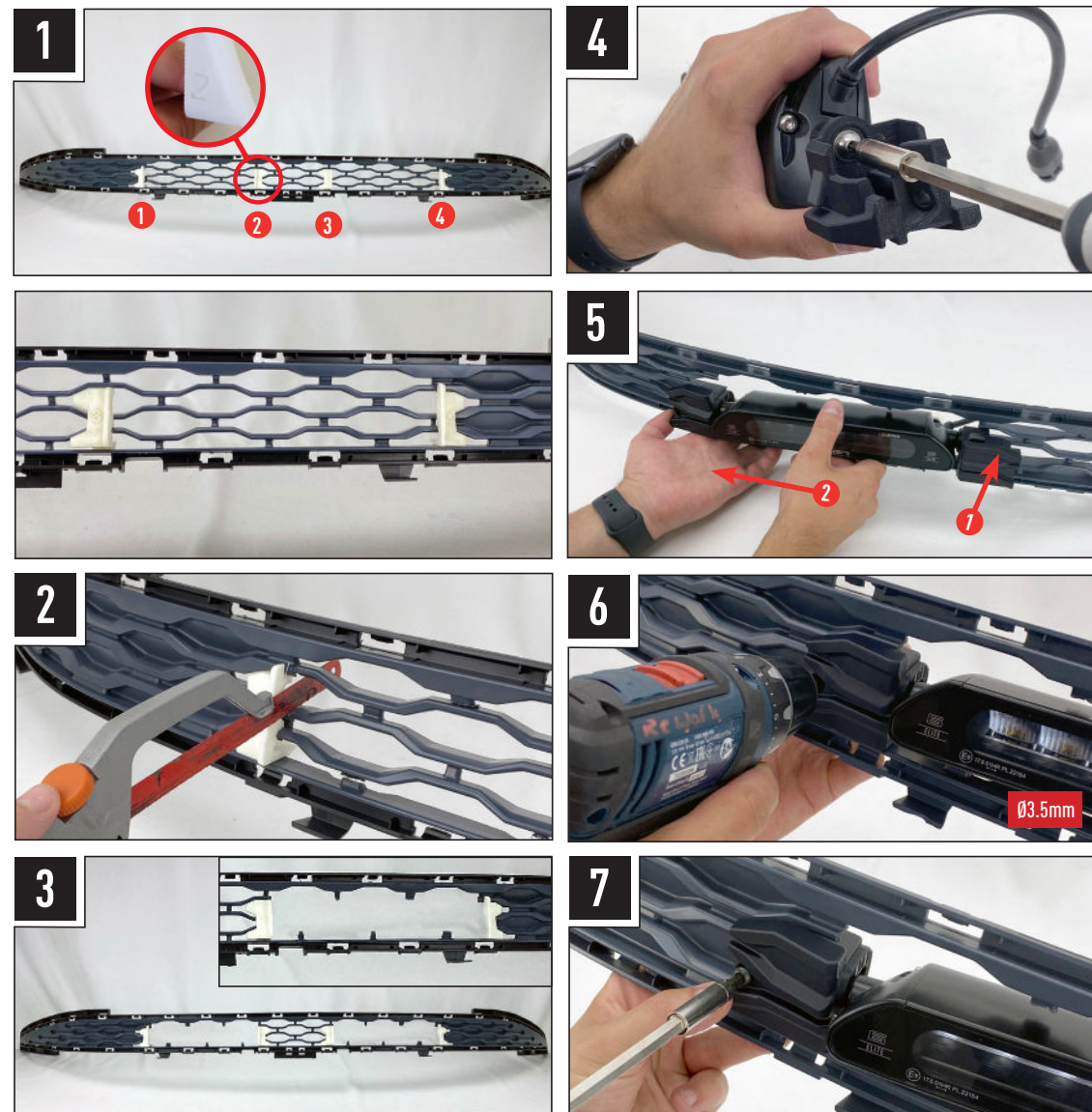
VW T7 (2022+)  
GRILLE INTEGRATION KIT

FITTING INSTRUCTIONS

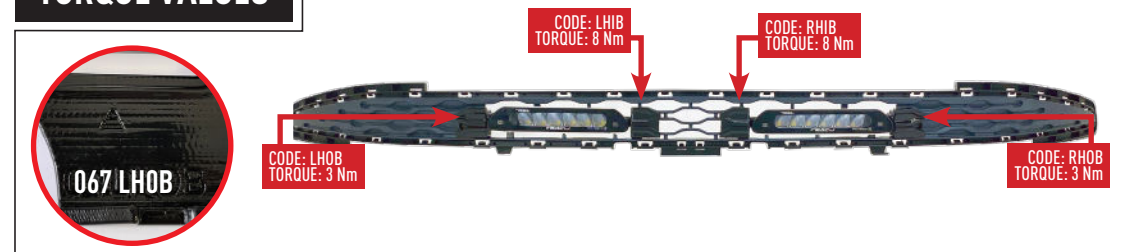


## INSTALLATION PROCESS

Install should be completed with the grille left on the vehicle.

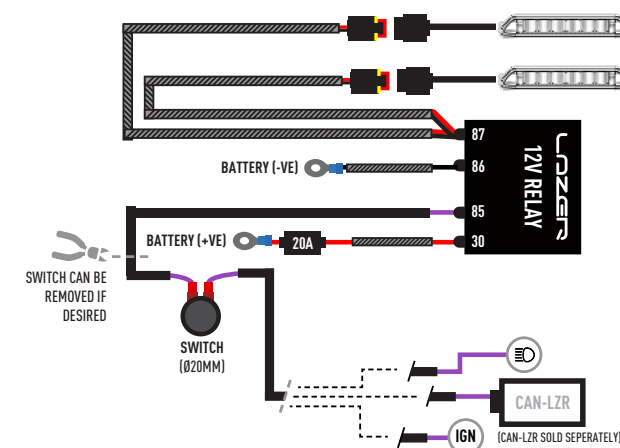


## TORQUE VALUES



## ELECTRICAL CONNECTION

### LINEAR-6 (STANDARD OR ELITE)



## CANBUS INTEGRATION

For vehicles where it is not possible to locate a 12V high beam signal, it will be necessary to take the high beam signal from the vehicle's CAN system. For vehicle specific CAN instructions, please download the "CANM8 Connect" App.

